

Exporting common AX 2009 Environment Configuration Settings

Published by: [Insight into Dynamics AX Administration](#)

1. Introduction

1.1 Purpose

The following set of tasks document the procedure for exporting common configuration settings from an AX 2009 environment using the Microsoft Database Publishing Wizard.

Why would you want to export your config settings?

The export file can be used for running in your environment when a data refresh has been done.

So the procedure would be as follows:

- take a copy of the config settings in your non-production environment whose data is to be overwritten
- refresh your non-production environment with data from another environment
- execute the config settings exported prior to the refresh into your non-production environment to replace them with the correct settings for your non-production environment

1.2 Description of Config Settings Exported

Configuration Setting	Description
BIANALYSSERVER	BI Analysis Cube Database Location and Databases (figure 1)
BICONFIGURATION	BI Analysis Cube Database Location and Databases (figure 1)
COMPANYDOMAINLIST	Companies (figure 2)
EPGLOBALPARAMETERS	AOT & Role Centre EP Parameters (figure 3)
EPWEBSITEPARAMETERS	Enterprise Portal Website Parameters (figure 4)
SRSSERVERS	SSRS Reporting Server Parameters (figure 5)
SYSBCPROXYUSERACCOUNT	Business Connector User (figure 6)
SYSERVERCONFIG	Server Configurations (figure 7)
SYSWORKFLOWPARAMETERS	Workflow Parameters (figure 8)

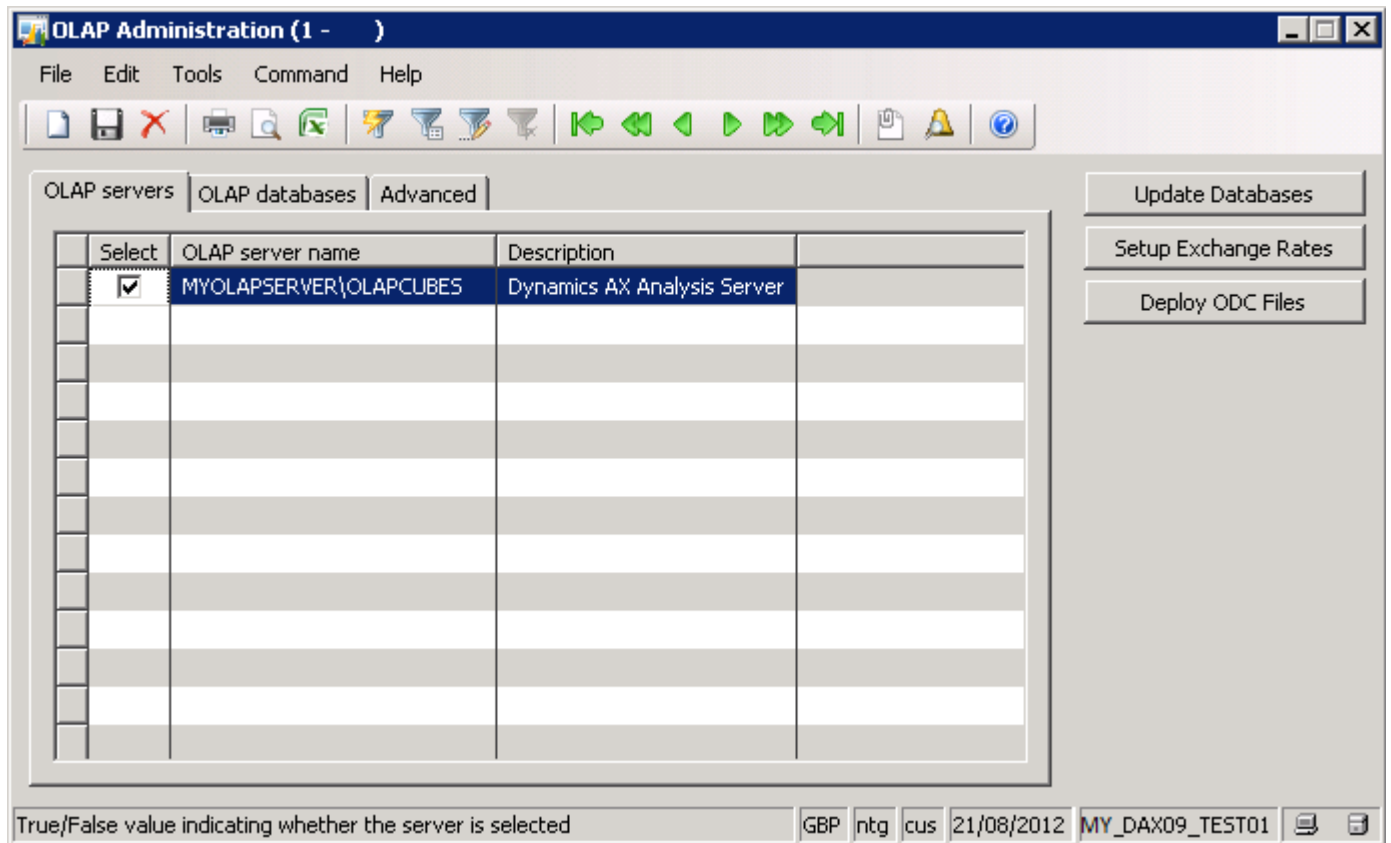


Figure 1

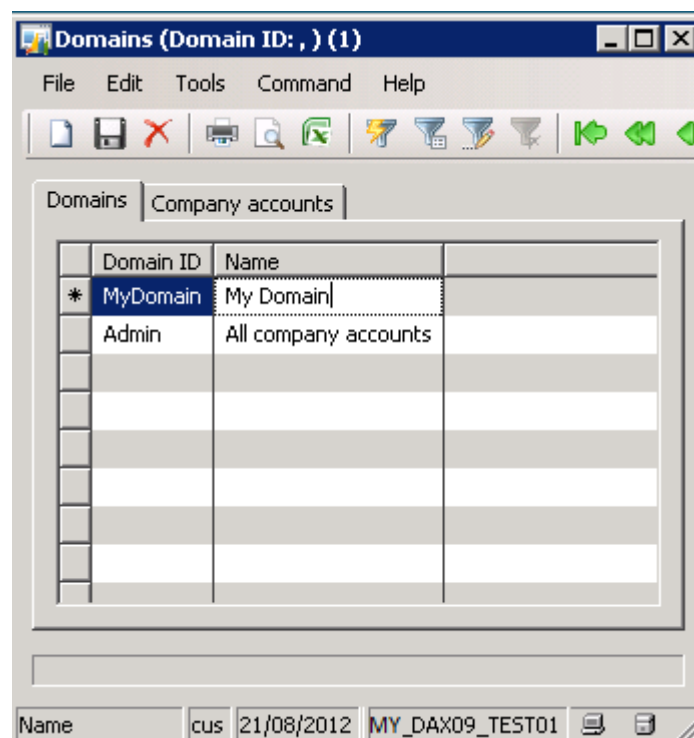


Figure 2

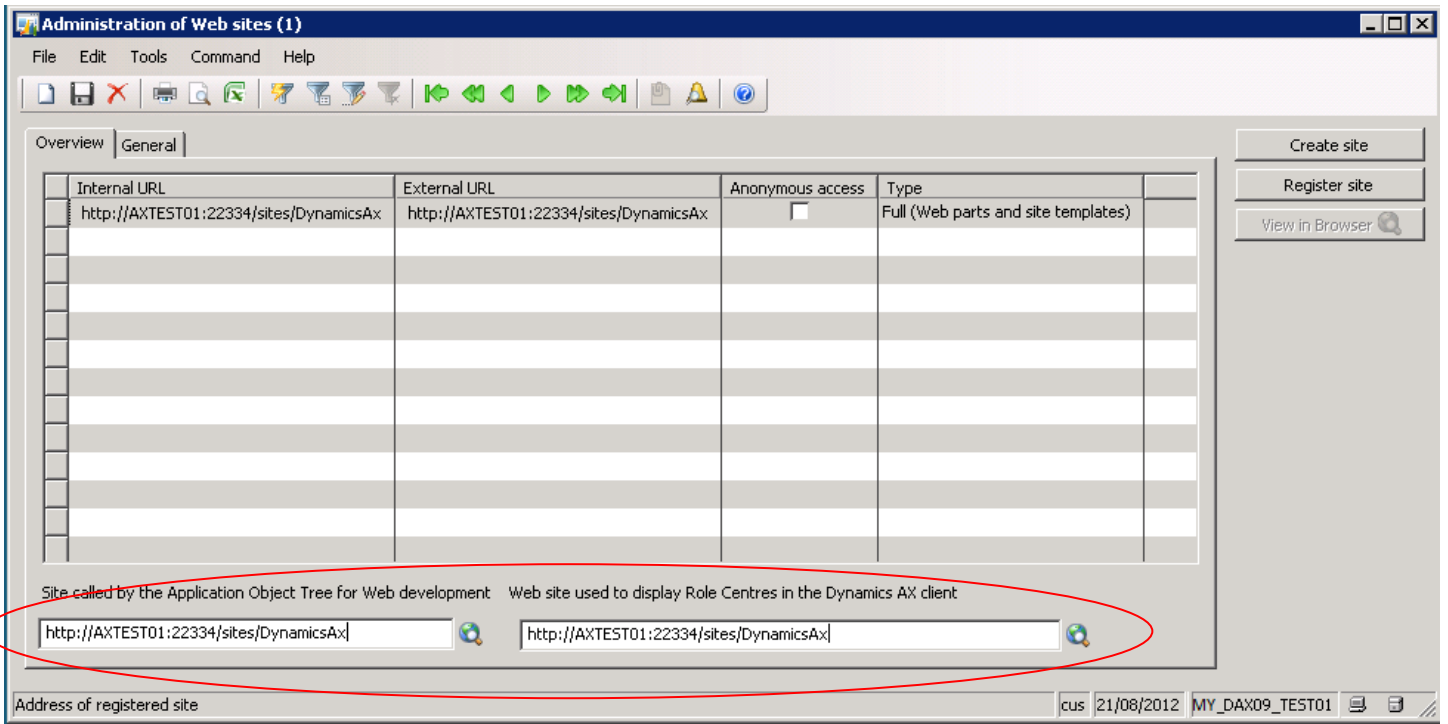


Figure 3

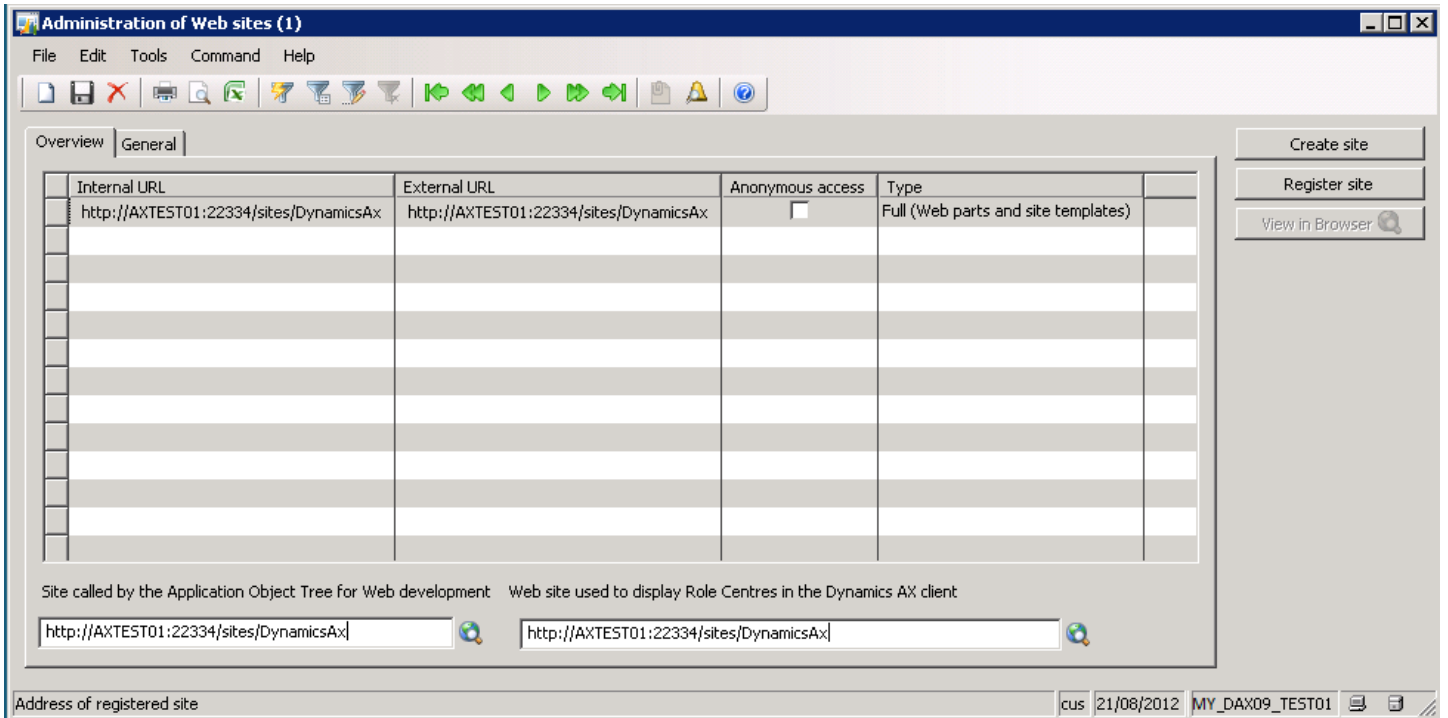


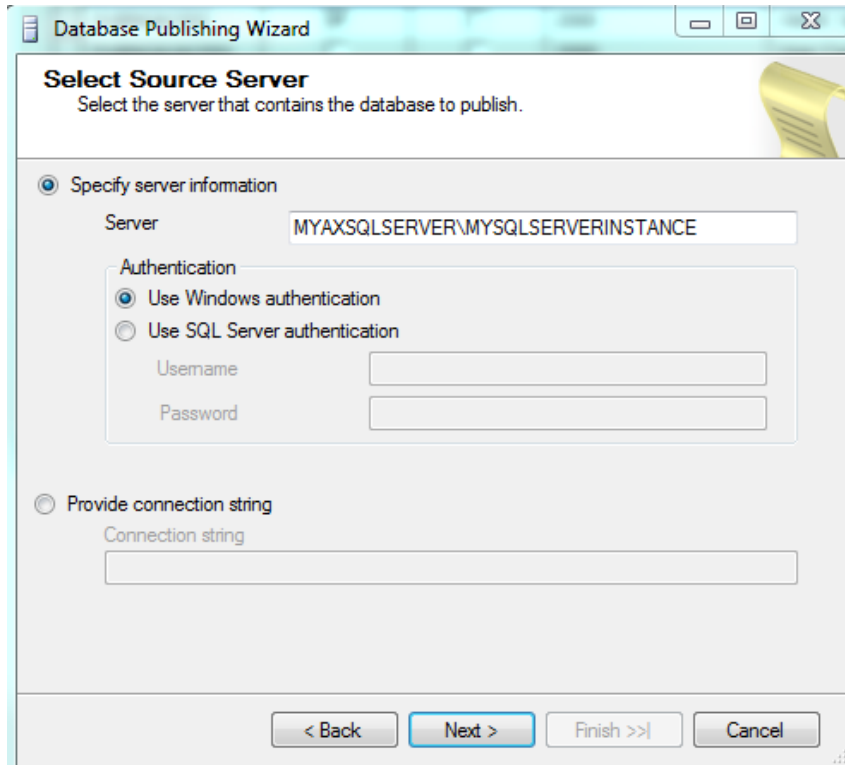
Figure 4

2. Exporting Environment Config Settings

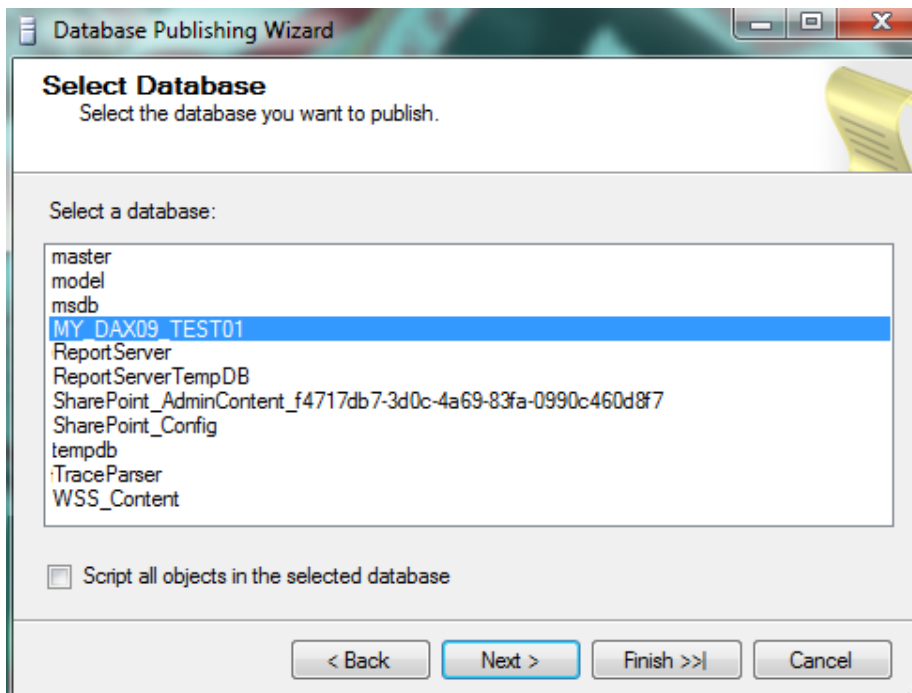
Pre-Requisites

- Microsoft SQL Server Database Publishing Wizard must be installed on the client machine
 - Download link: <http://www.microsoft.com/en-gb/download/details.aspx?id=5498>
- Server Instance name where AX 2009 database resides

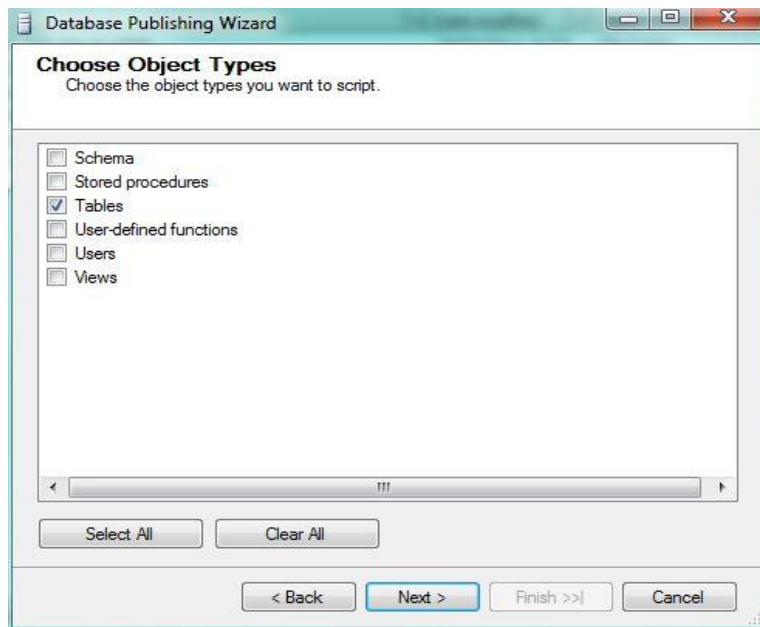
Export Process



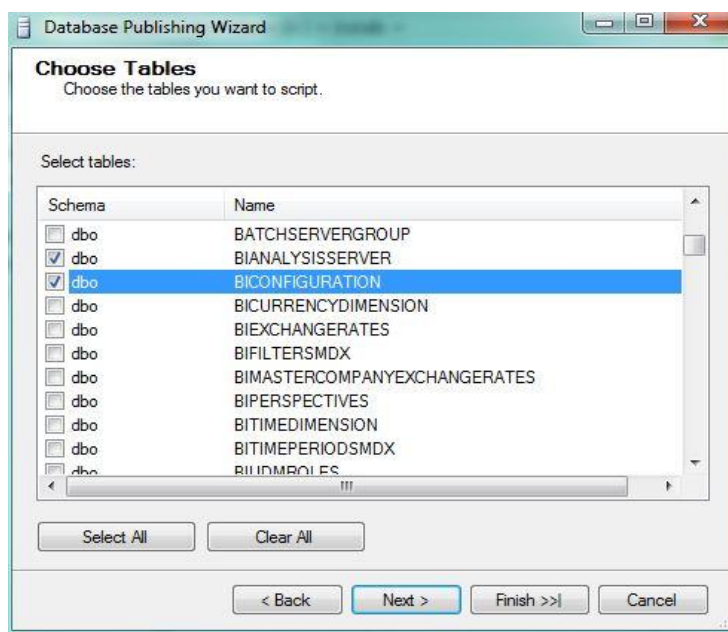
Enter Server Instance name where database config settings resides



Select database name and uncheck the option to 'Script all objects in the selected database'

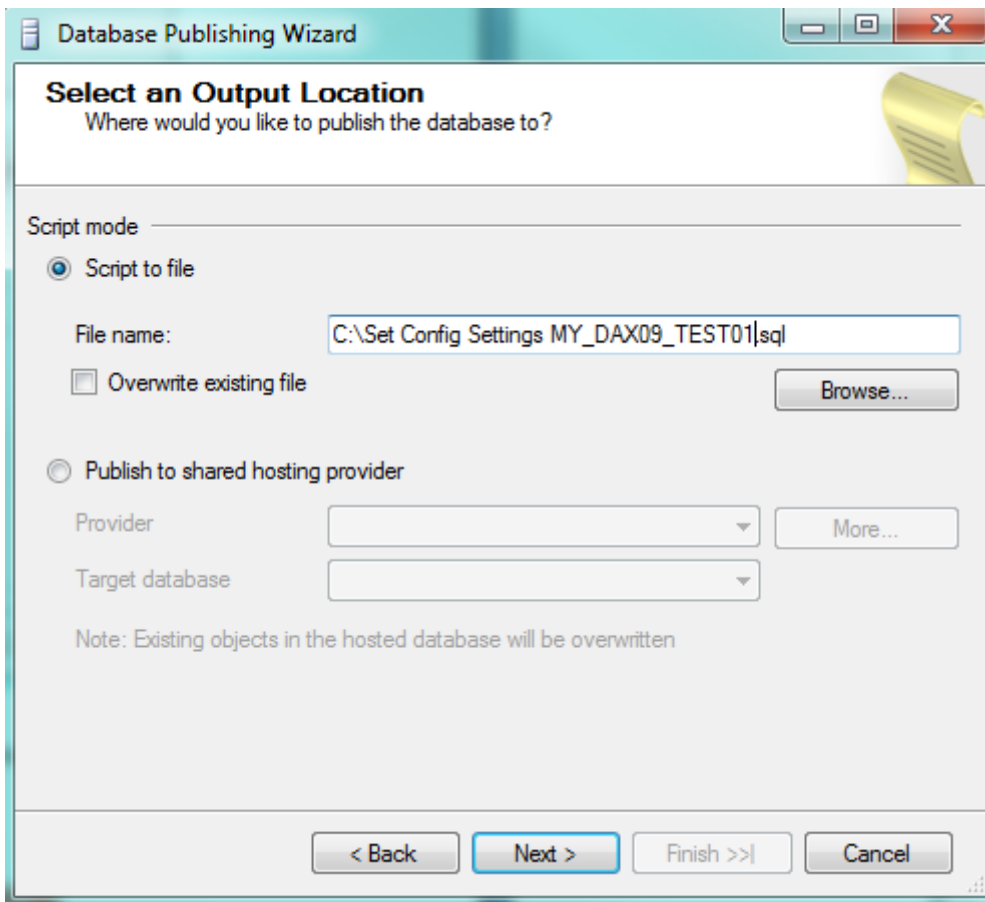


Select 'Tables'

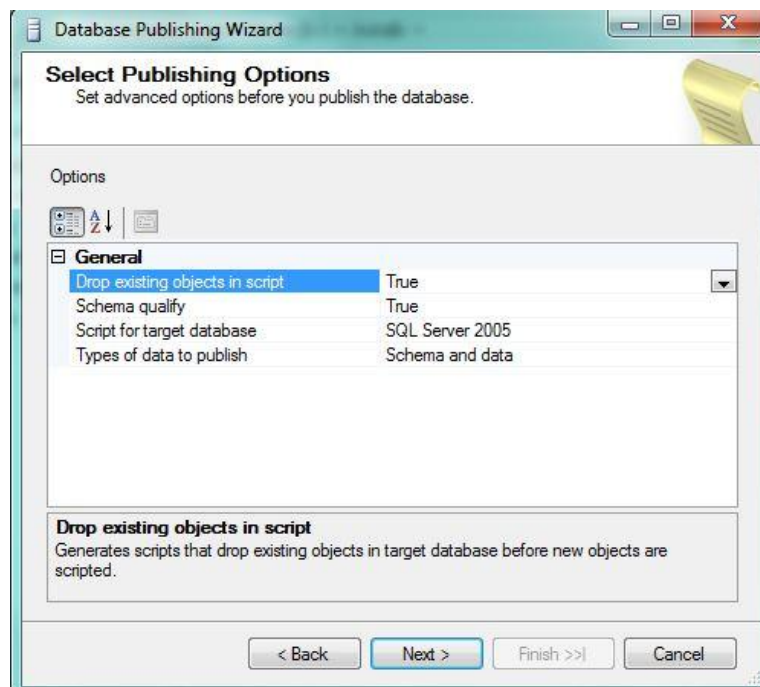


Check the following tables:

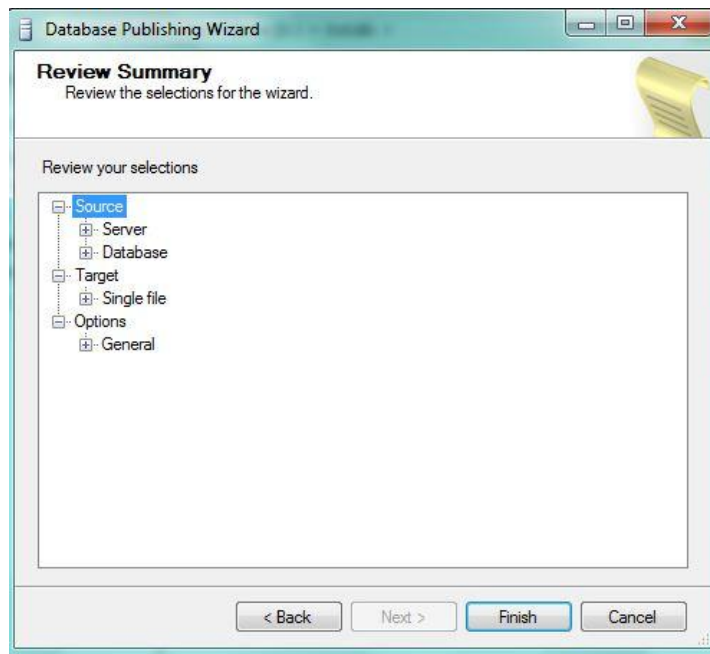
Config Settings
BIANALYSSSERVER
BICONFIGURATION
COMPANYDOMAINLIST
EPGLOBALPARAMETERS
EPWEBSITEPARAMETERS
SRSSERVERS
SYSBCPROXYUSERACCOUNT
SYSSERVERCONFIG
SYSWORKFLOWPARAMETERS



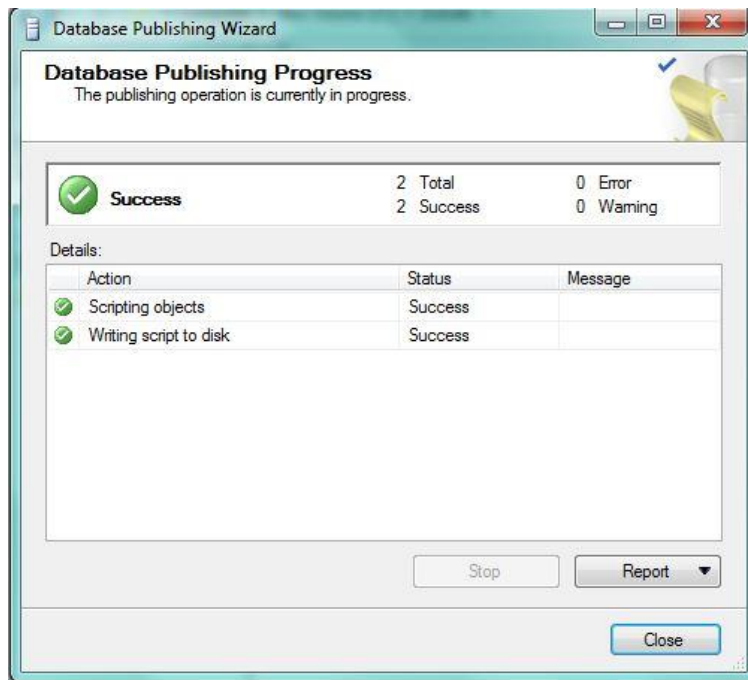
Specify a name for the file.
 Naming Convention: "Set Config Settings [<environment name>].sql"



Accept the defaults if using SQL Server 2005



Click 'Finish'



Completed Successfully, the file will now be saved in the location specified.